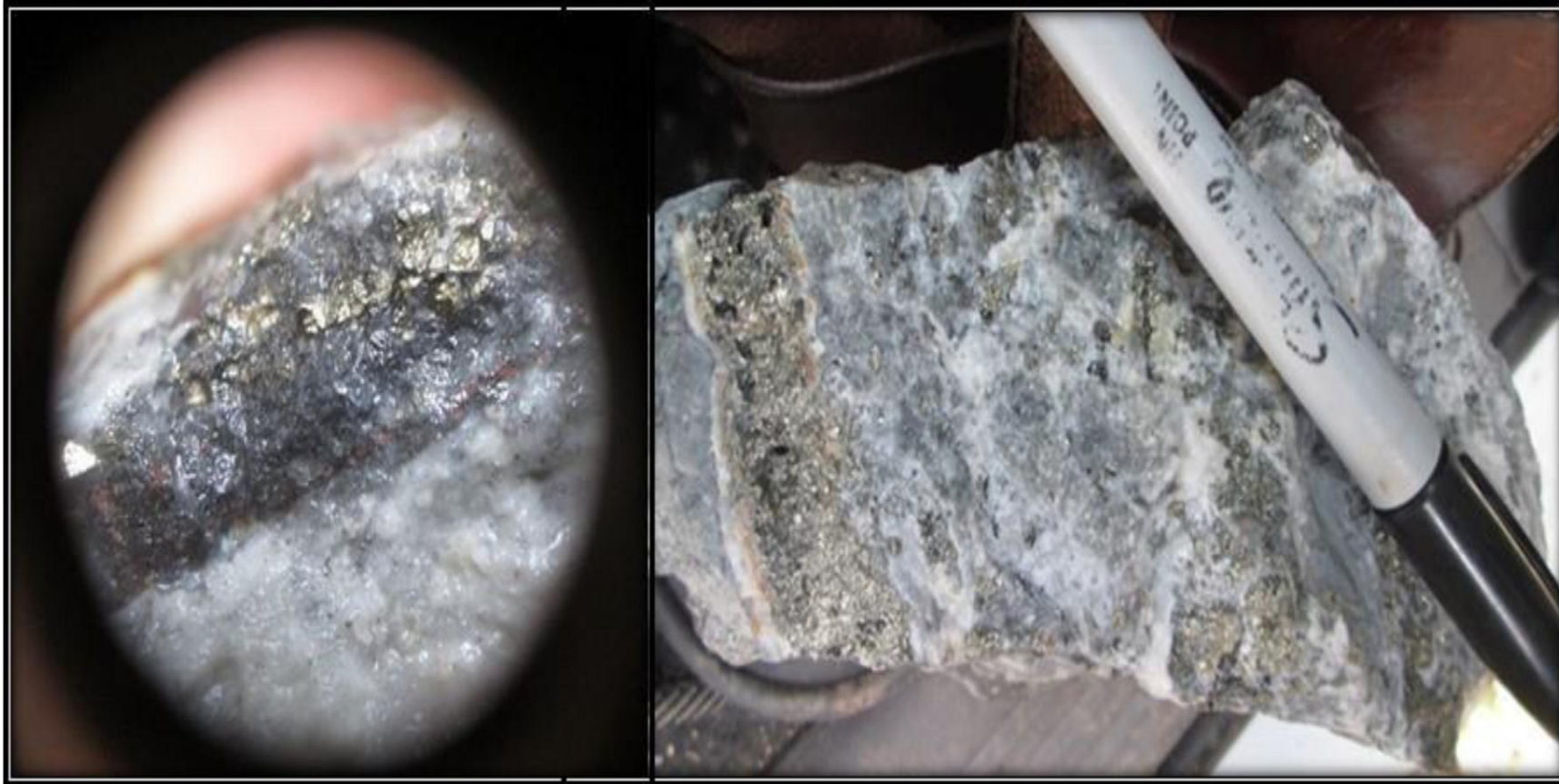


# Exploring Business Opportunities

## Project 031



Quartz-Pyrite-Hematite from 1cm to 1.5m with 12.5 gr Au/ton



Property with mining title

The area is located in the Coffee Region. The Plan of Works and Works (PTO) is advanced; pending the Environmental License (LA).

It has Mining Title. It consists of 700 hectares. 5 active mines. a tunnel of 50 with subcontract and the other 4 total approximately 300 meters. It has 2 drill holes, a total of 472 meters drilled, 2 platforms..

6 grams per ton on average.



Mineral: Precious metals and their concentrates

Gold Mine: Vein gold.

Exploitation: Artisanal mining

Type of mining: Underground.

Area: 710 hectares.

Validity: 30 years (until 2034, extendable)

Stage: Enters construction and assembly May 1, 2019.

Ethnic lands: Request to start the prior consultation process due to the presence of an indigenous community.



**Joel Carmona Duque**  
Geólogo Senior

## Plant

[www.joelcarmona.co](http://www.joelcarmona.co)

WhatsApp. +57 304 578 2111



La Victoria processing plant, simple gravimetric circuit.

Benefit plant







**Joel Carmona Duque**  
Geólogo Senior

# Structures

[www.joelcarmona.co](http://www.joelcarmona.co)

WhatsApp. +57 304 578 2111



Mineralized structures in mines 1 and 2



It is found in the form of veinlets between 1cm and 1.5m wide, sub-vertical, forming a corridor 600m wide by more than 1.5 km long.

Characteristic mineralization consists of Pyrite, Arsenopyrite, Stibnite, Quartz, Carbonates, Hematite.

Veins up to 1.5 m thick, of quartz-adularia- pyrite

Tenor up to 12 g of Au/ton.



Epithermal (banding textures, presence of Sb).

Associated evidence of a porphyry Au-Cu deposit (Potassium alteration, intramineral type quartz veinlets, secondary biotite).

Project available for sale or investment with purchase option